

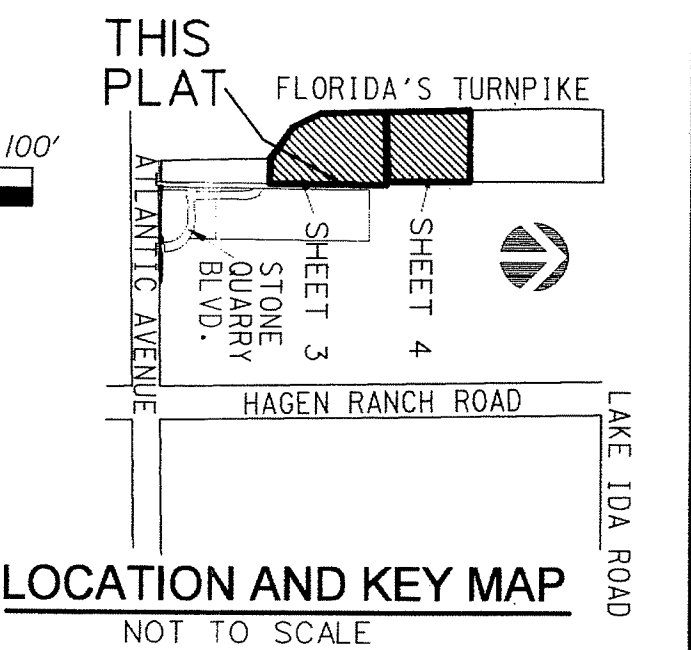
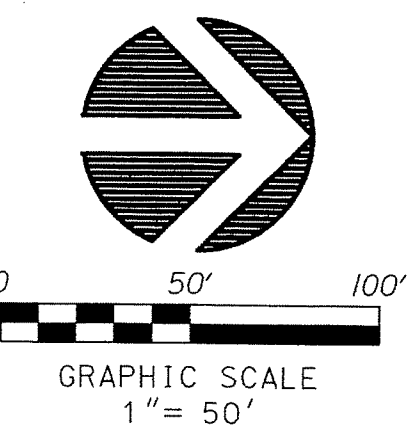
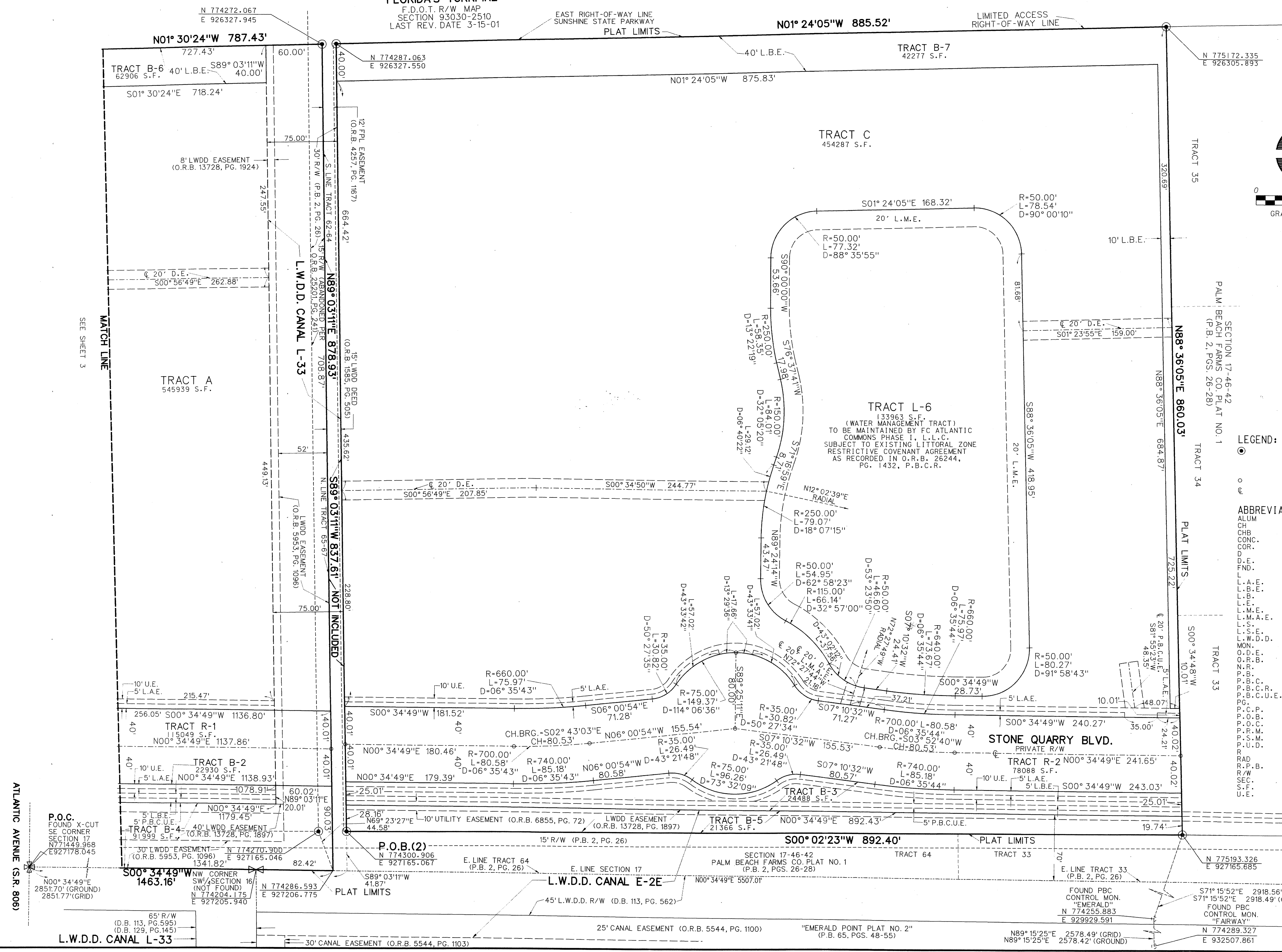
PERIMETER
 SURVEYING & MAPPING
 Certificate of Authorization No. LB7264
 Prepared by: Jeff S. Hodapp, P.S.M.
 949A Clint Moore Road
 Boca Raton, Florida 33487
 Tel: (561) 241-9988
 Fax: (561) 241-5182

ATLANTIC COMMONS - PLAT THREE

A PORTION OF THE ATLANTIC COMMONS PUD
 BEING A REPLAT OF A PORTION OF TRACTS 33, 34, 35, 62, 63, 64, 65, 66, 67, 94, 95, 96, 97 AND 98 IN SECTION 17,
 TOWNSHIP 46 SOUTH, RANGE 42 EAST, "PALM BEACH FARMS CO. PLAT NO.1" (P.B. 2, PGS 26-28, P.B.C.R.)
 SECTION 17, TOWNSHIP 46 SOUTH, RANGE 42 EAST, PALM BEACH COUNTY, FLORIDA.

146

SHEET 4 OF 4



LEGEND:

- PERMANENT CONTROL POINT
 - STAMPED P.C.P. *LB7264
 - STAMPED P.C.P. *LB7264
 - CENTERLINE
- ABBREVIATIONS:**
- ALUM ALUMINUM
 - CH CHORD
 - CONC. CONCRETE
 - COR. CORNER
 - DELTA (CENTRAL ANGLE)
 - DRAINAGE EASEMENT
 - FOUND FOUND
 - ARCLength
 - L.A.E. LIMITED ACCESS EASEMENT
 - L.B.E. LANDSCAPE BUFFER EASEMENT
 - L.B. LANDSCAPE BUSINESS
 - L.E. LANDSCAPE EASEMENT
 - L.M.E. LAKE MAINTENANCE EASEMENT
 - L.M.A.E. LAKE MAINTENANCE ACCESS EASEMENT
 - L.S. LICENSED SURVEYOR
 - L.W.D.D. LAKE WORTH DRAINAGE DISTRICT
 - MON. MONUMENT
 - O.D.E. OFFSITE DRAINAGE EASEMENT
 - O.R.B. OFFICIAL RECORDS BOOK
 - NON-RADIAL NON-RADIAL
 - P.B. PLAT BOOK
 - P.B.C. PALM BEACH COUNTY
 - P.B.C.R. PALM BEACH COUNTY RECORDS
 - P.B.C.U.E. PALM BEACH COUNTY UTILITY EASEMENT
 - P.C. PERMANENT CONTROL POINT
 - P.O.B. POINT OF BEGINNING
 - P.O.C. POINT OF COMMENCEMENT
 - P.P.M. PROFESSIONAL SURVEYOR & MAPPER
 - P.S.M. PLANNED UNIT DEVELOPMENT
 - P.U.D. RADIAL
 - RAD. RADIAL
 - R.F.B. ROAD PLAT BOOK
 - R/W. RIGHT-OF-WAY
 - SEC. SECTION
 - S.F. SQUARE FEET
 - U.E. UTILITY EASEMENT

P.O.C.
 FOUND X-CUT
 SE CORNER
 SECTION 17
 N771448.958
 E927178.045

L.W.D.D. CANAL L-33
 65' R/W (D.B. 113, PG.595)
 5' L.A.E. (D.B. 129, PG.145)

P.O.B.(2)
 N 774300.906
 E 927165.067

E. LINE TRACT 33 (P.B. 2, PG. 26)
 E. LINE SECTION 17 (P.B. 2, PGS. 26-28)

FOUND PBC CONTROL MON. "EMERALD"
 N 774255.883
 E 929929.591

FOUND PBC CONTROL MON. "FAIRWAY"
 N 774289.327
 E 932507.861